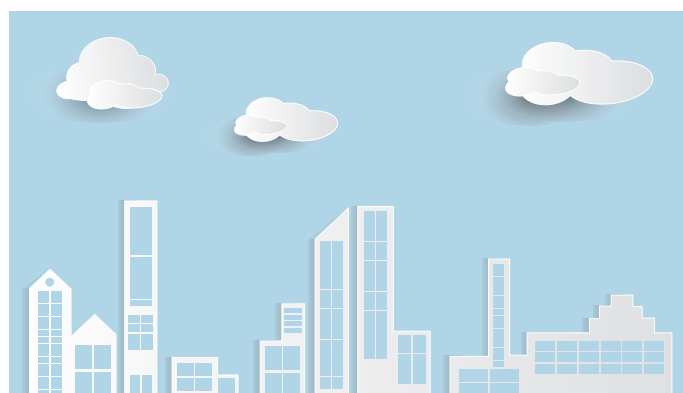




SHAREHOLDERS



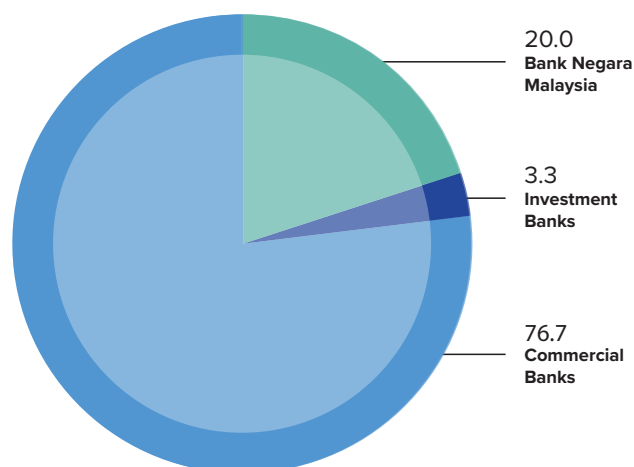
CAGAMAS HOLDINGS BERHAD'S SHARE CAPITAL STRUCTURE

AS AT 25 MARCH 2021

Issued and Paid-up Capital: 150 million
ordinary shares of RM1 each

SHAREHOLDING STRUCTURE

AS AT 25 MARCH 2021



Type of Shareholders	% Shareholding	No. of Shareholders	Range of % Shareholding
Bank Negara Malaysia	20.0	1	20.0
Commercial Banks	76.7	18	0.2 – 16.5
Investment Banks	3.3	4	0.4 – 1.6
Total	100.0	23	

ANALYSIS OF SHAREHOLDINGS

AS AT 25 MARCH 2021

Size of Shareholding	No. of Shareholders	% of Shareholders	No. of Shares Held	% of Issued Capital
300,001 to less than 7,500,000 (less than 5%)	16	70	31,395,000	20.9
7,500,000 (5%) and above	7	30	118,605,000	79.1



SHAREHOLDERS

(CONTINUED)

SHAREHOLDERS OF CAGAMAS HOLDINGS BERHAD

AS AT 25 MARCH 2021

Shareholders	No. of Shares	% Shareholding
Bank Negara Malaysia	30,000,000	20.0
CIMB Bank Berhad	24,684,000	16.5
Malayan Banking Berhad	21,279,000	14.2
RHB Bank Group	12,932,400	8.6
RHB Bank Berhad	11,732,400	7.8
RHB Investment Bank Berhad	1,200,000	0.8
AmBank (M) Berhad	12,066,000	8.0
Public Bank Group	10,485,600	7.0
Public Bank Berhad	9,885,600	6.6
Public Investment Bank Berhad	600,000	0.4
Hong Leong Bank Berhad	8,958,000	6.0
HSBC Bank Malaysia Berhad	6,201,000	4.1
Alliance Bank Group	5,583,000	3.7
Alliance Bank Malaysia Berhad	3,183,000	2.1
Alliance Investment Bank Berhad	2,400,000	1.6
Standard Chartered Bank Malaysia Berhad	4,590,000	3.1
Affin Bank Group	4,410,000	2.9
Affin Bank Berhad	3,660,000	2.4
Affin Hwang Investment Bank Berhad	750,000	0.5
United Overseas Bank (Malaysia) Berhad	3,330,000	2.2
OCBC Bank (Malaysia) Berhad	2,997,000	2.0
MUFG Bank Malaysia Berhad	738,000	0.5
SIBB Berhad	450,000	0.3
Bangkok Bank Berhad	369,000	0.3
The Bank of Nova Scotia Berhad	327,000	0.2
Deutsche Bank (Malaysia) Berhad	300,000	0.2
Bank of China (Malaysia) Berhad	300,000	0.2
Total	150,000,000	100.0